

Sample collection: As simple as 1, 2, 3...

In vivo Tracheo-bronchial lavage

1. What you'd need:

- One helper to restrain the pig
- Gloves
- Pig snare
- Sterile catheter
- 15 ml sterile saline solution loaded into a 20 ml sterile syringe
- Collection tube
- Permanent marker

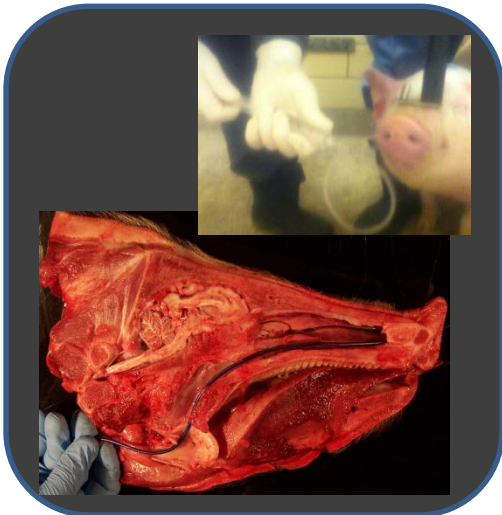
2. How you'd collect it:

- Restrain the pig using a snare
- Attach the syringe to the catheter
- Gently pass the catheter (~40 cms) thru one nostril
- Perfuse the saline solution and aspirate back immediately
- Gently withdraw the catheter from the pig's nose
- Transfer the collected solution to the tube

3. How you'd process it:

- Identify the sample(s) (date, animal ID, etc.)
- Refrigerate the samples
- Pack in a leak proof container
- Fill out the submission form(s)
- Ship to: University of Minnesota

Veterinary Diagnostic Laboratory
1333 Gortner Ave
St. Paul, MN 55108




UNIVERSITY OF MINNESOTA
VETERINARY DIAGNOSTIC LAB