

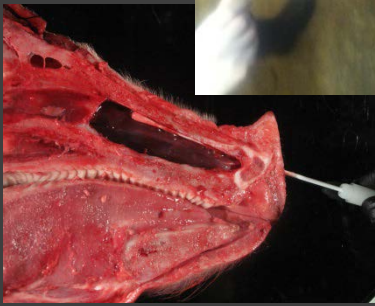
Sample collection: As simple as 1, 2, 3...

# Nasal swab



## 1. What you'd need:

- One helper to restrain the pig
- Gloves
- Pig snare
- Sterile swab
- Permanent marker



## 2. How you'd collect it:

- Restrain the pig using a snare
  - Introduce the swab into each nostril at a 45° angle latero-medial towards the nasal septum, then straightened and inserted carefully as rostral as possible
  - Rotate the swab clockwise and counterclockwise upon entry and exit
- Note: temporary bleeding may occur



## 3. How you'd process it:

- Identify the sample(s) (date, animal ID, etc.)
- Refrigerate the samples
- Pack in a leak proof container
- Fill out the submission form(s)
- Ship to: University of Minnesota



Veterinary Diagnostic Laboratory  
1333 Gortner Ave  
St. Paul, MN 55108